

**JONES HOME HARDWARE**

11-12 Castle Street, Hay-on-Wye HR3 5DF

Tel: 01497 820760 Fax: 01497 821760

[www.joneshomehardware.co.uk](http://www.joneshomehardware.co.uk)

A traditional Hardware Store with everything you could possibly need, from tacks to timers, chainsaws to candles. A real Aladdins Cave.

**The Cookshop**

A cooks haven full to bursting of quality cookware from Stella saucepans to wooden spoons. We have something for everyone.

**Garden Machinery**

Our extensive range of HONDA lawnmowers, STIHL saws & brushcutters along with KAWASAKI, COUNTAX tractors & more, make us worth a visit.

Open 9am - 5.30pm Monday to Saturday

Deliveries available in England & Wales

**THE HAY MAKERS**

St John's Place, Hay-on-Wye HR3 5BN

A co-operative of designer-makers selling pottery, wood, glass, stone, jewellery and textiles.

*Exhibitions of visiting artists from Easter to Christmas.*

Tel 01497 820556

[www.haymakers.co.uk](http://www.haymakers.co.uk)

Open daily, 10.30am - 5pm, Sun 11 - 4pm

**LLEWELYN & COMPANY**  
DECORATIVE LIVING

19 Hightown, Hay-on-Wye HR3 5AE

A beautiful blend of the finest Antique and reproduction French, Scandinavian and British furniture & home accessories.

Charmingly set out on two floors.

Tel 01497 821880

[www.llewelynandcompany.com](http://www.llewelynandcompany.com)

4

## THE WYE GALLERY

5A Castle Street,  
Hay-on-Wye,  
Hereford HR3 5DF  
Tel. (01497) 821163

Antiquarian prints, signed limited edition prints and etchings by Gillian McDonald, Frances St. Clair Miller, David Bowyer and others.

**Open**  
**Monday to Saturday** 10am - 5pm  
**Sunday** 11am - 4pm

5

## LION ANTIQUES

2 Lion Street, Hay-on-Wye HR3 5AA



Fine period furniture.  
Silver and silver plate.  
Ceramics and glass. Pictures.  
Period metalware.  
**Marjorie Abel, Hamish Macdonald,**  
**John Grisewood**  
Tel 01497 822882

6



**mostlymaps.com**

*for a good impression*

Castle Street,  
Hay-on-Wye HR3 5DF



*Probably Wales' only antique map shop.*  
*We sell antique maps from the Sixteenth to the Twentieth Century on all areas of the world.*  
*Antique prints also sold.*  
*Browse our online gallery [www.mostlymaps.com](http://www.mostlymaps.com) 24 hours a day, then come and visit in person.*  
**Tel: 01497 820539** Members ABA, IMCoS, IAMA.

7

## BULLRING ANTIQUES

Bear Street, Hay-on-Wye HR3 5AN



A dazzling selection of Antiques including chandeliers, furniture, glass, jewellery, rugs, oil paintings, porcelain, prints, watercolours, and everything for the dining tale.

**Tel 01497 820467**

**Situated next to Kilvert Hotel & The Old Stables**

8

## HAY ANTIQUE MARKET

6 Market Street, Hay-on-Wye HR3 5AF



26 dealers selling an interesting variety of antiques and collectables including furniture, china, linen, glass, kitchenalia, jewellery, period clothing and metalware.

**Tel 01497 820175**  
**[www.hayantiquemarket.co.uk](http://www.hayantiquemarket.co.uk)**

**Open 10am-5pm Sunday 11am-5pm**

46



# chattels

3&4 Market Street, Hay-on-Wye

t 01497 820195

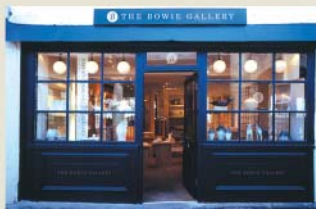
so many gifts & cards, so many choices  
for so many occasions

*'a really lovely gift shop'*



## THE BOWIE GALLERY

Lose the crowds and see the very best  
of contemporary ceramics in the  
heart of Hay on Wye.



5 Market Street • Hay on Wye • Hereford HR3 5AF

Tel: 01497 821026 • email: [info@hayclay.co.uk](mailto:info@hayclay.co.uk) • [www.hayclay.co.uk](http://www.hayclay.co.uk)

## ADELA'S DRESS AGENCY

1 Lion Street, Hay-on-Wye HR3 5AA

Ladies clothing agency which stocks new and nearly new  
fashions, footwear and accessories.

**Tel. 01497 821199**

*Open Wed-Sat 10am to 4pm*

## HAY-ON-WYE TOURIST INFORMATION BUREAU

Craft Centre, Oxford Road, Hay-on-Wye, Hereford HR3 5DG

**Tel : 01497 820144**

Open Daily :-

**Summer:** 10am-1pm / 2pm-5pm

**Winter:** 11am-1pm / 2pm-4pm

**[post@hay-on-wye.co.uk](mailto:post@hay-on-wye.co.uk) • [www.hay-on-wye.co.uk](http://www.hay-on-wye.co.uk)**

12

# ART MATERIALS

PHOTOS PRINTED  
ONTO CANVASFRAMING SERVICE  
24 HOUR TURNROUNDGREETINGS CARDS  
MOUNTED PRINTS**LOCAL VIEWS  
GIFTS PHOTO FRAMES  
FINE ART PRINTING****OLD FOREST ARTS**STUDIO 9, THE CRAFT CENTRE, OXFORD RD  
HAY-ON-WYE. HR3 5DG Tel: 01497 821458

13



## THE FUDGE SHOP

**Our own delicious Fudge !**

15 Scrumptious flavours.

Luxury Chocolates.

Traditional Sweets.

**Hay-on-Wye Craft Centre****Tel: (01497) 821529**

14

## Satori Designs

Beautiful crystals, stunning jewellery, and a range of mystical, magical and magnificent gifts! Let Satori Designs delight your senses with it's unique atmosphere and originality.

**Studio 4 • Craft Centre • [www.satori-shop.co.uk](http://www.satori-shop.co.uk)  
Oxford Rd, Hay-on-Wye HR3 5DG Tel. (01497) 821316**

15



## The Flower Shop

**GORDON DANIEL**

45b Lion Street, Hay-on-Wye HR3 5AA

[www.hayflowershop.co.uk](http://www.hayflowershop.co.uk)[petal@hayflowershop.co.uk](mailto:petal@hayflowershop.co.uk)**tel/fax 01497 820106**

16

## THE GREEN ROOM

45a Lion Street, Hay-on-Wye HR3 5AA



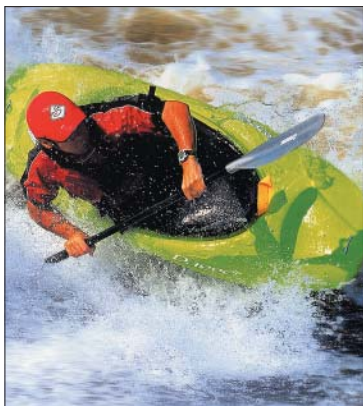
Discover the real meaning of tranquility in our secret garden and view our unusual selection of garden and home giftware.

**Tel 01497 822833****Fax 01497 831021**

48

**P.S.M.**

7 Castle Street, Hay-on-Wye HR3 5DF



*Where can you find  
a huge range of  
outdoor clothing,  
camping accessories  
and canoe  
equipment.*

P.S.M. have everything  
for your outdoor needs.  
Summer travel and surf  
wear. Massive stocks of  
fleeces and waterproofs.

Excellent choice of boots, rucksacks,  
travel accessories and maps.

There is a new range of Kayaks and Canoes suitable for  
beginners and some cutting edge design for white water  
warriors. Excellent choice of paddles, cags,  
wetsuits, teva's and aquashoes.

*Probably the best collection in mid-wales.*

**Tel / Fax 01497 820022**

**[www.psmoutdoors.co.uk](http://www.psmoutdoors.co.uk)**

Open Mon to Sat 9.30-5.30. Sunday 11.00-5.00



Hay Town Clock